

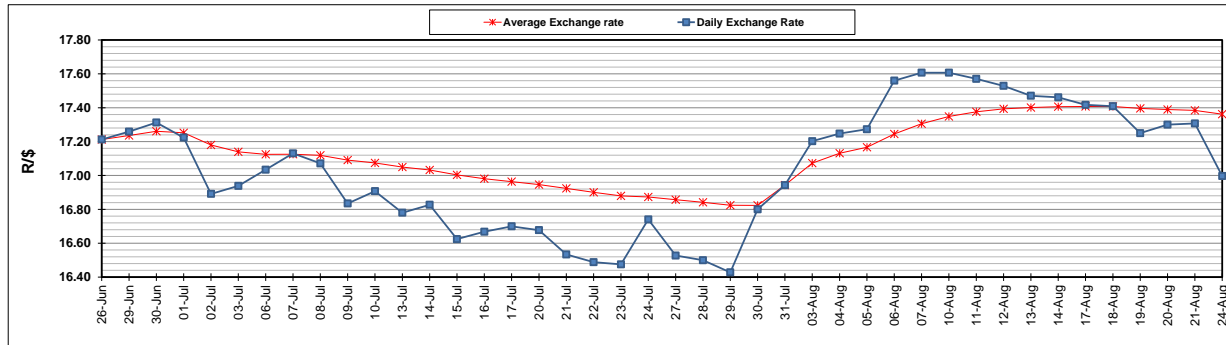
	PETROL 95 ULP	PETROL 93 ULP & LRP	DIESEL 0.05%	DIESEL 0.005%	ILL. PAR.
GAUTENG PUMP PRICE (SA c/l) AS FROM 05/08/2020	1,517.000	1,488.000	-	-	-
WHOLESALE PRICE (SA c/l) AS FROM 05/08/2020	-	-	1,348.560	1,352.960	742.828
SINGLE NATIONAL MAXIMUM RETAIL PRICE	-	-	-	-	934.000
BASIC FUEL PRICE - 24/08/2020 (SA c/l)	573.202	564.482	554.895	557.963	492.008
PRESS RELEASE CONTRIBUTION TO BFP 05/08/2020 - 24/08/2020 (SA c/l)	569.770	550.770	597.630	602.030	538.128
UNIT OVER/(UNDER) RECOVERY - 24/08/2020 (SA c/l)	(3.432)	(13.712)	42.735	44.067	46.120
AVERAGE BASIC FUEL PRICE 31/07/2020 - 24/08/2020	564.952	555.559	573.959	578.202	510.171
AVERAGE UNIT OVER/(UNDER) RECOVERY 31/07/2020 - 24/08/2020	3.936	(5.671)	15.730	15.887	21.075

ANALYSIS MOVEMENT OF AVERAGE OVER/(UNDER) RECOVERY

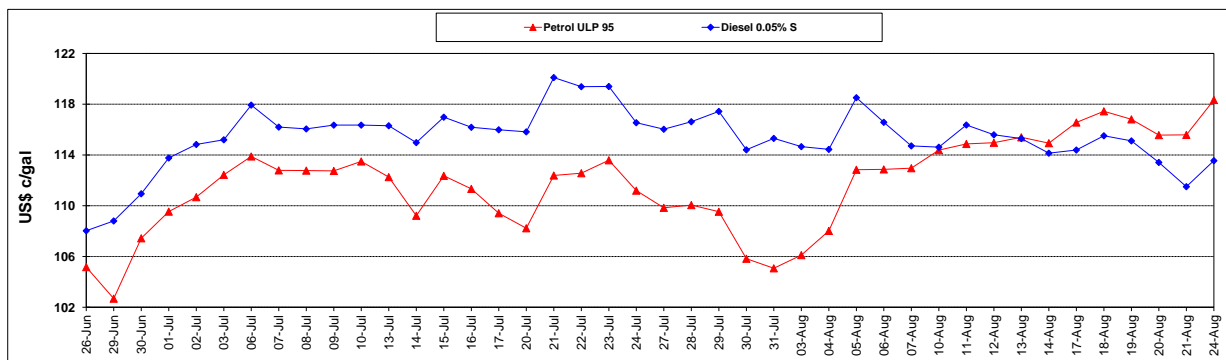
	PETROL 95	PETROL 93	DIESEL 0.05%	DIESEL 0.005%	ILL. PAR.
- MOVEMENT IN INTERNATIONAL PRODUCT PRICES	21.456	11.557	33.529	33.817	36.896
- MOVEMENT IN EXCHANGE RATE	(17.520)	(17.228)	(17.799)	(17.930)	(15.821)
AVERAGE UNIT OVER/(UNDER) RECOVERY 31/07/2020 - 24/08/2020	3.936	(5.671)	15.730	15.887	21.075

R/\$ EXCHANGE RATE - (R/\$16.9965 - 24/08/2020)

EXCHANGE RATE USED IN BASIC FUEL PRICE



INTERNATIONAL PRODUCT PRICES OF BASKET USED IN BASIC FUEL PRICE



BASIC FUEL PRICE IN SA CENTS PER LITRE

